

INSTALLATION INSTRUCTIONS *for new Installations*

Follow these instructions to install newly purchased kits to a machine which does not currently have VHI PC-Kits installed. After installation, you will be required to activate PC-Kits before it can be used. Activation is available via the Internet 24 hours a day or by phone during the support hours listed below.

1. Exit all running software and temporarily disable any virus protection software you may be using.
2. Place the VHI PC-Kits disk into your CD drive. The setup program will automatically start. If the setup program does not start, go to **My Computer** and right-click on the CD drive. Choose **AutoPlay** from the menu.
3. From the splash screen that appears, click on **Install or Remove PC-Kits** (see Figure 1).
4. Continue to follow the on screen instructions until the **Serial Numbers** dialog appears (see Figure 3). Enter the serial numbers for your new kits. These numbers are on the inside of the front flap of the box you received. After entering each serial number, press the **Add** button.
5. After you have added your new serial number(s), click **Next** and continue to follow the remaining on screen instructions. If asked to reboot at the end of setup, then do so before continuing.
6. Start VHI PC-Kits by double clicking the desktop icon. If you see the dialog shown in Figure 4, you will need to activate your PC-Kits installation before you can use it.
7. If you are connected to the Internet, select **Yes, I want to Activate over the Internet**. If you are not connected to the Internet, select **Yes, I want to Activate by telephone**. Click **OK**.
8. Follow the on screen instructions to perform the activation process. You only need to activate PC-Kits once each time you purchase new kits.

If you encounter any difficulties during the installation process, please call 1-800-356-0709 for product support.

Monday~Friday 8:00am~4:00pm (Pacific Time)

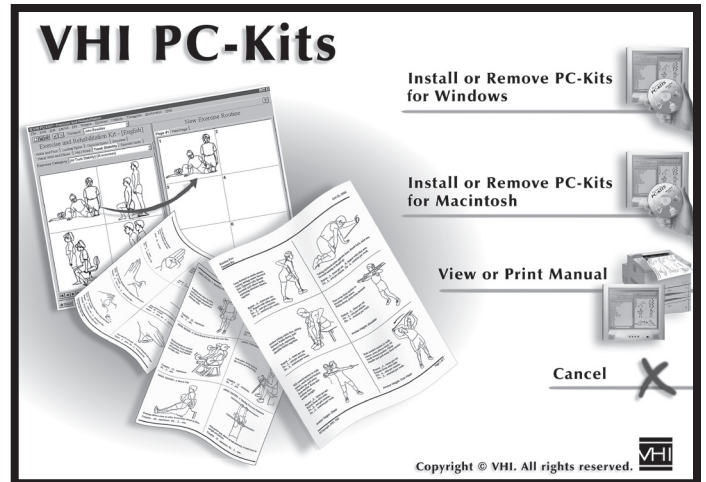


Figure 1. Splash Screen

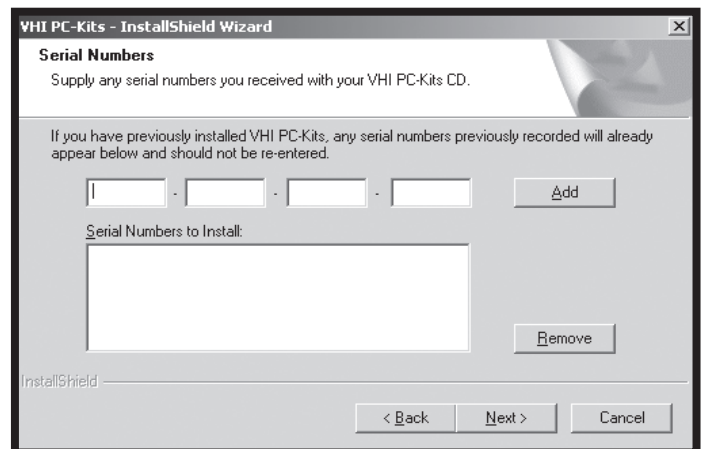


Figure 3. The Serial Numbers Dialog

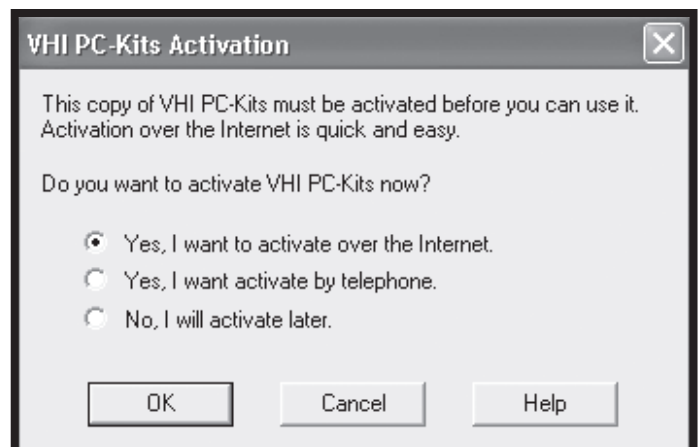


Figure 4. The Activation Dialog